



Beaufort County Public Works Stormwater Infrastructure Project Summary

Project Summary: Bluffton Middle School Phase II (Reimbursement)

Activity: Routine/Preventive Maintenance

Narrative Description of Project:

Project improved 680 L.F. of drainage system. Bush hogged 510 L.F. of channel. Grubbed and cleared 50 L.F. of channel. Cleaned out 560 L.F. of channel and 120 L.F. by hand. Removed (4) check dams. Installed rip rap and hydroseeded for erosion control.

Completion: Apr-15

2015-016A / Bluffton Middle School Ph II	Labor Hours	Labor Cost	Equipment Cost	Material Cost	Contractor Cost	Indirect Labor	Total Cost
AUDIT / Audit Project	1.0	\$20.46	\$0.00	\$0.00	\$0.00	\$13.23	\$33.69
CBH / Channel- bushhogged	29.0	\$596.67	\$440.52	\$83.86	\$0.00	\$418.18	\$1,539.23
CCO / Channel - cleaned out	70.0	\$1,610.80	\$433.68	\$253.70	\$0.00	\$1,086.60	\$3,384.78
CGRB / Channel - grubbed	4.0	\$154.36	\$65.52	\$24.32	\$0.00	\$87.16	\$331.36
DLO / Ditch Layout	18.0	\$397.92	\$21.24	\$12.90	\$0.00	\$264.96	\$697.02
HAUL / Hauling	63.5	\$1,333.56	\$581.98	\$1,361.53	\$0.00	\$868.24	\$4,145.30
HYDR / Hydroseeding	30.0	\$660.66	\$60.28	\$143.37	\$0.00	\$439.50	\$1,303.80
ONJV / Onsite Job Visit	43.0	\$1,343.88	\$137.24	\$80.10	\$0.00	\$965.95	\$2,527.17
PL / Project Layout	13.0	\$575.51	\$52.26	\$17.80	\$0.00	\$441.48	\$1,087.05
PRRECON / Project Reconnaissance	3.0	\$115.77	\$12.36	\$5.34	\$0.00	\$65.37	\$198.84
SG / Shoot Grade	12.0	\$245.52	\$21.24	\$15.05	\$0.00	\$158.76	\$440.57
TC / Traffic Control - Jobsite	9.0	\$202.47	\$188.34	\$60.13	\$0.00	\$136.05	\$586.99
WEED / Weedeating	4.0	\$89.36	\$7.08	\$12.46	\$0.00	\$59.82	\$168.72
2015-016A / Bluffton Middle School Ph II Sub Total	299.5	\$7,346.93	\$2,021.74	\$2,070.56	\$0.00	\$5,005.30	\$16,444.52
 Grand Total	 299.5	 \$7,346.93	 \$2,021.74	 \$2,070.56	 \$0.00	 \$5,005.30	 \$16,444.52

Before



During



After



**Project: Bluffton
Middle School
Phase II
(Reimbursement)**

**Activity: Routine/
Preventive
Maintenance**

**Project #:
2015-016A**

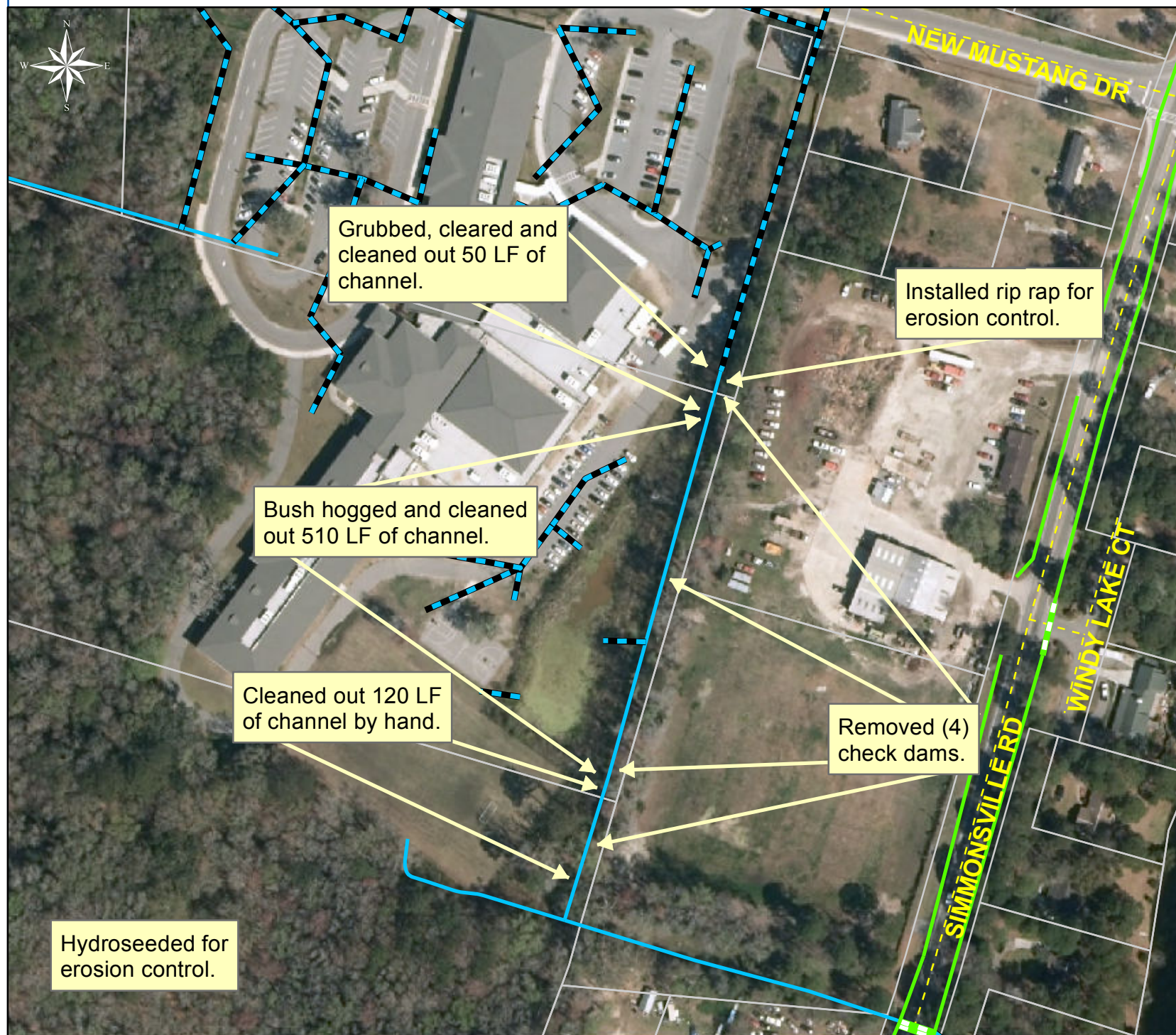
**Township: Town
of Bluffton**

**Completed:
April 2015**

Legend

TYPE

- River
- Creek/Stream
- River/Creek/Marsh BANK
- Channel (fka Outfall)
- Channel Pipe
- Lateral
- Lateral Pipe
- Roadside
- Roadside Pipe
- Road Pipe
- Crossline Pipe
- Driveway Pipe
- Access Pipe
- Bleeder Pipe



0 40 80 160 240 320
Feet

1 inch = 158 feet

Prepared By: BC Stormwater Management Utility

Date Print: 5/11/15

File: C:/sethdata/projects/projectmaps/Bluff Mid School PhII 2015-016A